

GEOTHERMAL POWER PLANT SIMULATOR

VR Based Simulator

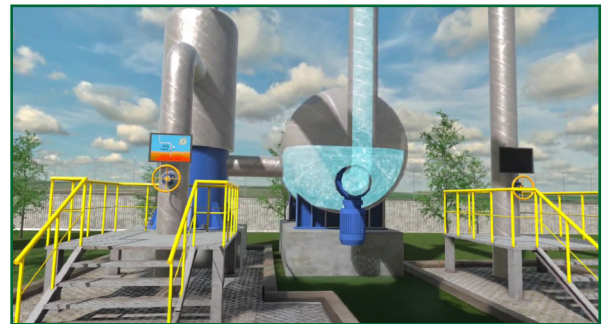
VOCATIONAL TRAINING SIMULATOR

SANLAB combines deep expertise in robotics and simulation with a customer-focused approach to deliver industry-leading vocational training simulators.

Geothermal Power Plant Simulator provides virtual tour of a geothermal power plant, allowing users to explore key systems and processes safely and interactively.

APPLICATIONS

- Geothermal Power Plants
- Energy Sector Training Centers
- Vocational & Technical Schools
- Operation & Maintenance Training
- Safety & Emergency Response Training



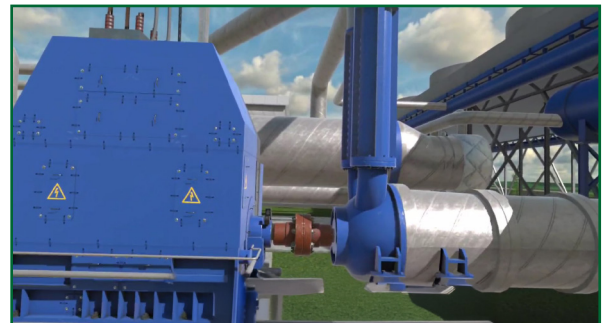
VR BASED

- Immersive experience
- Easy setup
- Future-ready



ADVANTAGES

- Cuts costs
- Eliminates accident risks
- Increases safety
- Lowers operating & maintenance costs
- Protects equipment
- Enables all-weather training
- No worksite required
- Eco-friendly use
- Realistic experience
- Multi-language support



SPECIFICATIONS

Power Supply

220VAC

Minimum System Requirements

Intel(R) Core(TM) i7 - 16 GB Ram - 500 GB SSD
NVidia GeForce RTX 3060 - Windows 11
Wireless Combo Keyboard Mouse