

PERFORMANCE CURVES OF
SHAKE TABLE ATOM

CONTENTS

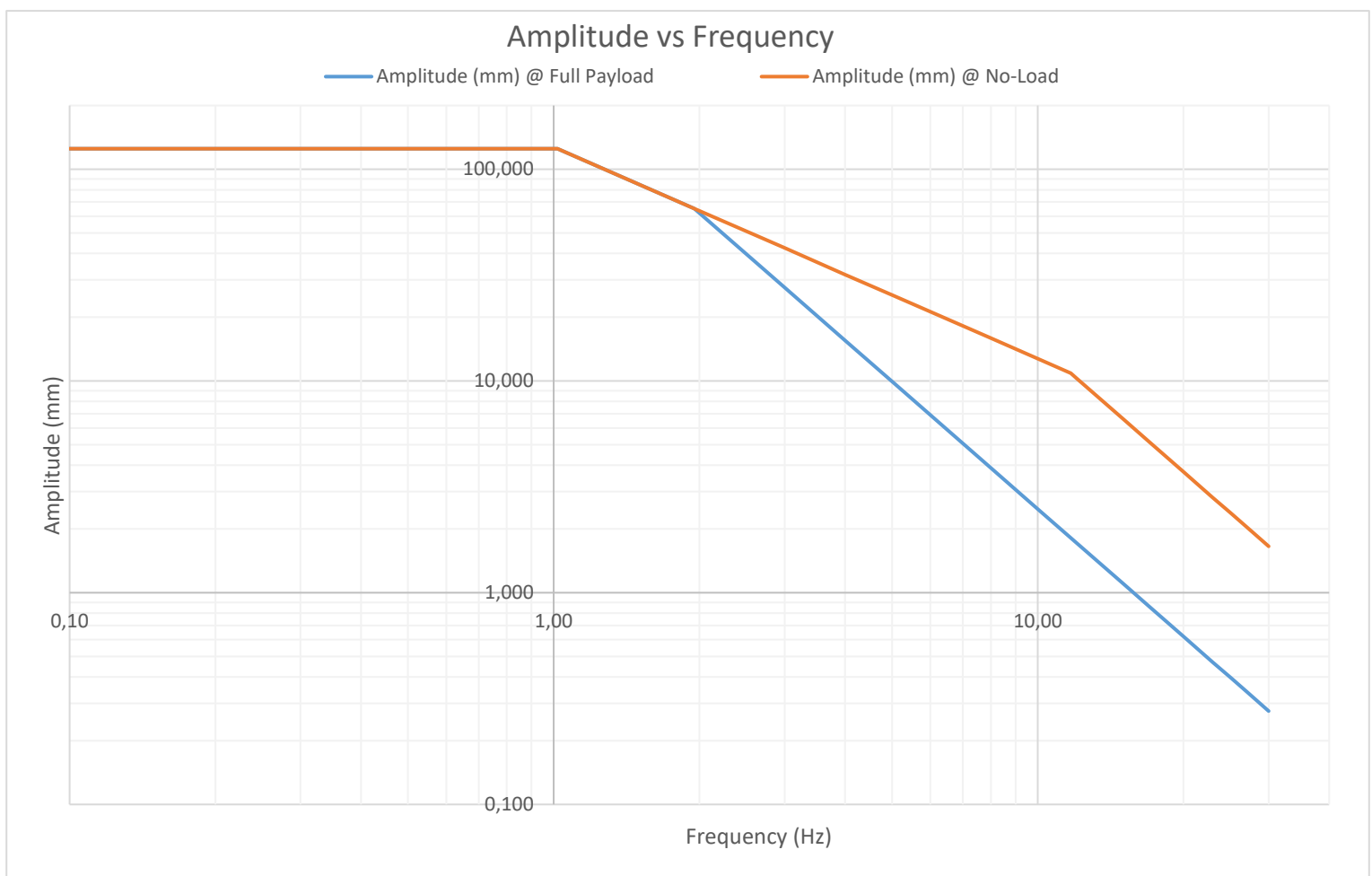
1.	PERFORMANCE CURVES.....	2
1.1.	GENERAL SPECIFICATIONS	2
1.2.	FREQUENCY vs AMPLITUDE CURVE.....	2
1.2.	FREQUENCY vs VELOCITY CURVE.....	3
1.4.	FREQUENCY vs ACCELERATION CURVE	3
1.5.	CHARTS	4

1. PERFORMANCE CURVES

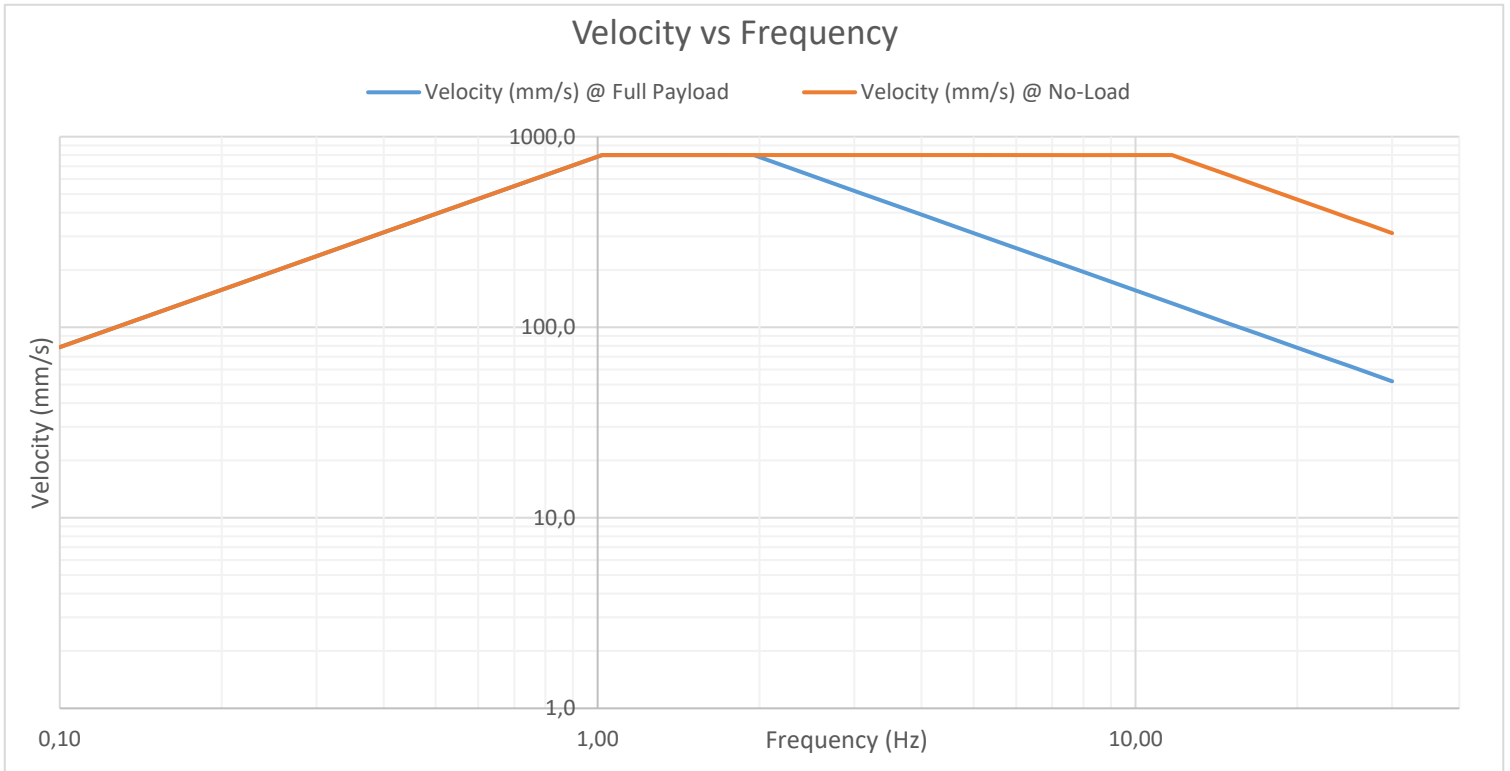
1.1. GENERAL SPECIFICATIONS

DESCRIPTIONS	VALUES
Maximum Payload Capacity	50 kg @ $\pm 1g$
Maximum Dynamic Stroke	250 mm (± 125 mm)
Maximum Velocity	800 mm/s
Maximum Acceleration @ Bare Table	$\pm 6g$
Maximum Operating Frequency	30 Hz (50 Hz. Optional)
Table Dimensions	250 x 250 mm
General Dimensions (L x W x H)	630 x 360 x 160 mm
Total Mass	18 kg

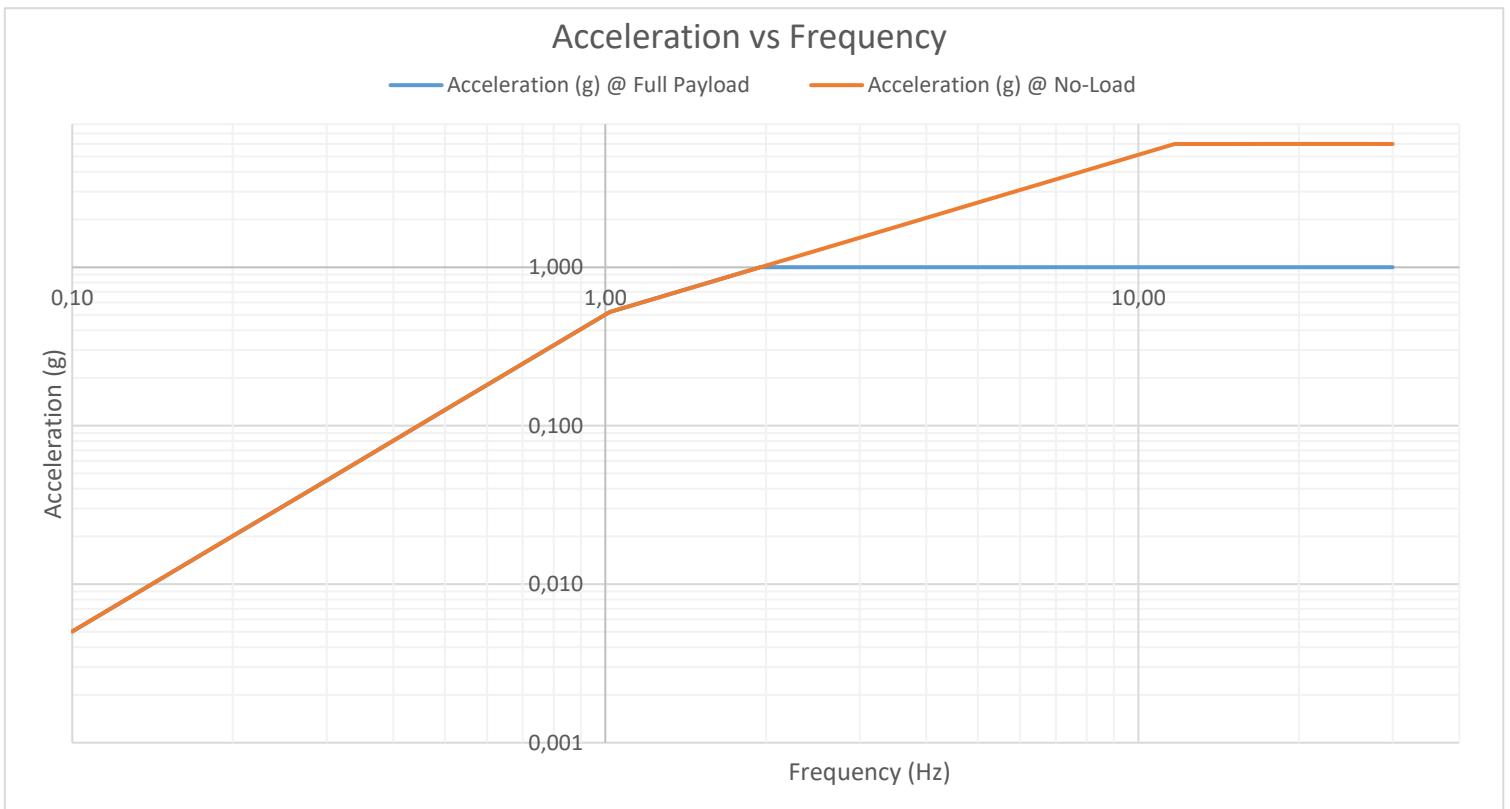
1.2. FREQUENCY vs AMPLITUDE



1.3. FREQUENCY vs. VELOCITY



1.4. FREQUENCY vs. ACCELERATION



1.5. CHARTS

Amplitude (mm) @ Full Payload	Frequency (Hz)	Velocity (mm/s) @ Full Payload	Acceleration (g) @ Full Payload
125,000	0,10	78,5	0,005
125,000	0,20	157,1	0,020
125,000	0,30	235,6	0,045
125,000	0,50	392,7	0,126
125,000	1,02	800,0	0,522
65,266	1,95	800,0	1,000
27,600	3,00	520,2	1,000
15,530	4,00	390,3	1,000
9,940	5,00	312,3	1,000
3,880	8,00	195,0	1,000
2,485	10,00	156,1	1,000
1,725	12,00	130,1	1,000
1,104	15,00	104,0	1,000
0,860	17,00	91,9	1,001
0,621	20,00	78,0	1,000
0,470	23,00	67,9	1,001
0,398	25,00	62,5	1,001
0,341	27,00	57,8	1,001
0,276	30,00	52,0	1,000
Amplitude (mm) @ No-Load	Frequency (Hz)	Velocity (mm/s) @ No-Load	Acceleration (g) @ No-Load
125,000	0,10	78,5	0,005
125,000	0,20	157,1	0,020
125,000	0,300	235,6	0,045
125,000	0,50	392,7	0,126
125,000	1,02	800,0	0,522
63,660	2,00	800,0	1,025
42,440	3,00	800,0	1,538
31,830	4,00	800,0	2,050
25,470	5,00	800,2	2,564
15,920	8,00	800,2	4,102
10,878	11,71	800,0	6,000
10,350	12,00	780,4	6,000
6,624	15,00	624,3	6,000
5,156	17,00	550,7	5,999
3,725	20,00	468,1	5,999
2,817	23,00	407,1	5,999
2,384	25,00	374,5	5,999
2,044	27,00	346,8	5,999
1,656	30,00	312,1	6,000